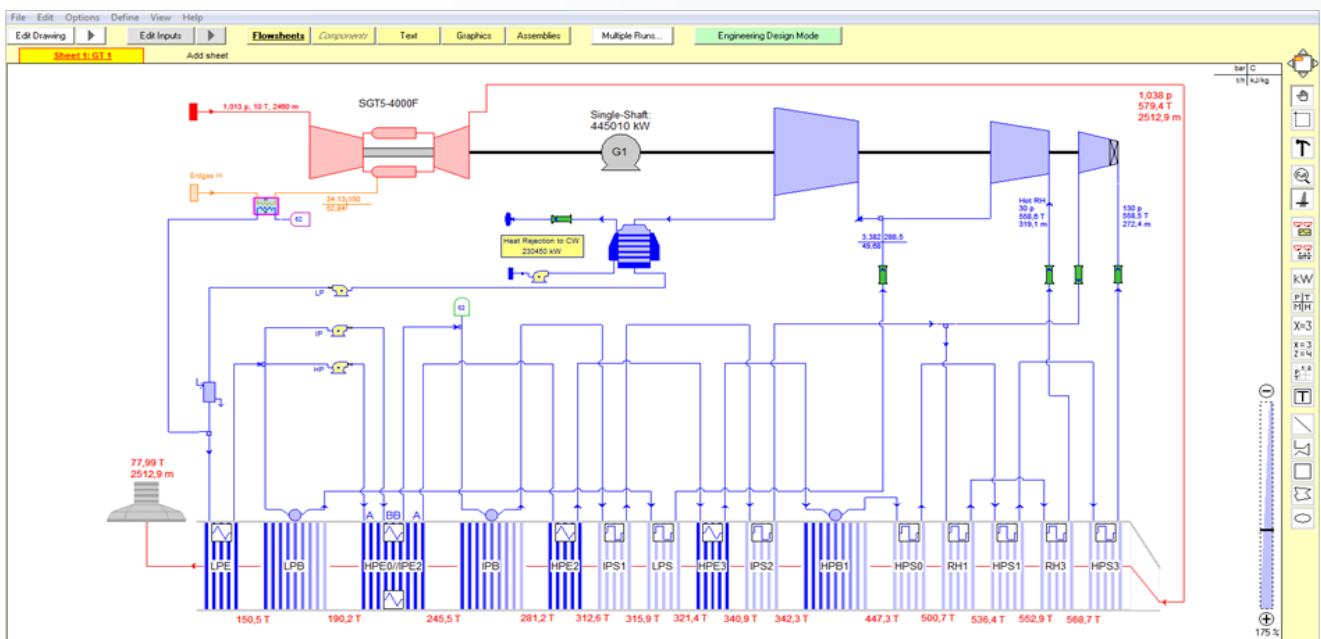


THERMOFLEX-PEACE®

GENERAL PURPOSE PROGRAM FOR PLANT DESIGN, SIMULATION AND COST ESTIMATION

THERMOFLEX is a modular **General Purpose Program** with a graphical interface that allows you to assemble models using icons representing **over 200 components**. The program covers both design and off-design modelling.

It can model all types of power and heat plants including GT or Reciprocating Engine Combined Cycles, Conventional Coal/Oil/Gas/Biomass/Waste fired Rankine Steam Cycles, Concentrated Solar Thermal Power Plants (CSP), Gasification and Carbon-Capture (CCS) Systems, Seawater Desalination Plants, Organic Rankine Cycles (ORC), Kalina Cycles, Repowering, Wind Power and Photovoltaic (PV) systems, Electrolyzer / H₂ & Ammonia Production Plants, Methanol Production Plants, Storages & Batteries and all type of Power-2-X Systems.



THERMOFLEX provides the GT PRO® gas turbine library (> 870 GT specs) and libraries for reciprocating gas & diesel engines (>500 specs), Wind Turbines, PV Modules, Fuel Cells and Electrolyzers. The Steam Turbine Assembly feature provides automatic estimation of efficiencies, leakage flows and information about the entire steam turbine such as dimensions, weight and costs.

